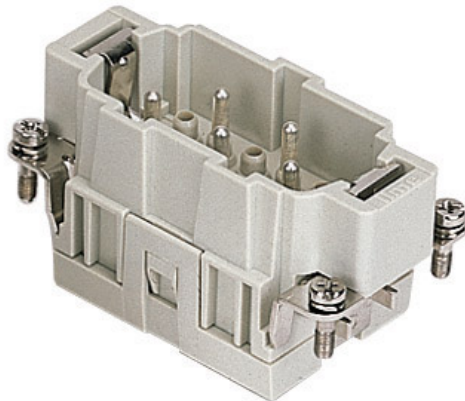




Part number

CMSEM 03



Brief description:

male insert, 3 poles + PE, spring terminal connections , 16A 830V, (2 poles (16A max - 500V/6kV/3)), 8kV, 3, silver plated, size "57.27", CLASS insert series

Product description		Approvals / Standards	
Model	male insert	Reference standard	EN 61984 (2001-11)
Version	spring terminal connections	Quality mark	 , EAC
Series	CMSE	Conformity	CQC, CE
Product type	with male contacts	General ordering information	
Family	CLASS inserts	EAN13 code	8015747128438
Size	size "57.27"	Tariff number	85369095
N. of poles	3 poles + 	Country of origin	Made in EU (IT)
Auxiliary poles	2 poles (16A max - 500V/6kV/3)	ETIM classification	EC000438
Technical data		Packaging Information	
Current	16 A (A.C. and D.C.)	Packaging length	210,00 mm
Voltage	830 V	Packaging height	130,00 mm
Rated impulse withstand voltage	8kV	Packaging width	240,00 mm
Pollution degree	3	Packaging weight	1,65 kg
Wire cross-section	0,14 mm ² - 2,50 mm ²	Packaging volume	6,55 dm ³
AWG size	26 - 14	Packaging description	Carton box
Operating temperature range (min, max)	-50°C ... +70°C	Packaging quantity	30 Pcs
Contact type	silver plated	Packaging EAN code	8015747128698
Mating cycles	≥ 200	Sub-packaging weight	0,28 kg
IP degree of protection	IP20 without enclosure; IP65/IP66/IP67/IP68 with enclosure	Sub-packaging description	Carton
PE wire cross-section	0,14 - 4 mm ² ; AWG 20 - 12	Sub-packaging quantity	5 Pcs
Sub-packaging EAN barcode			8015747128704
Further technical details			
Characteristics according to EN 61984	16A 830V 8kV 3 (aux: 16A 500V 6kV 3); 16A 1000V 8kV 2 (power contacts only)		
Insulation resistance	≥ 1 GΩ		
Rated voltage according to UL/CSA	600V		
UL 94 flammability rating	V-0		
Weight	55,00 g		

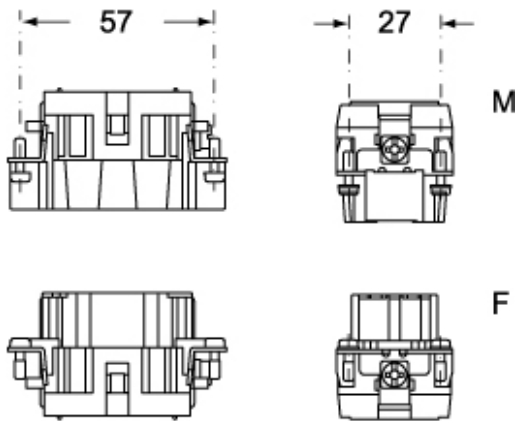
Part number

CMSEM 03

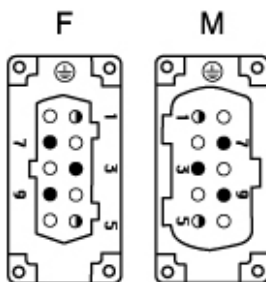


Catalogue drawings

CMSEM 03

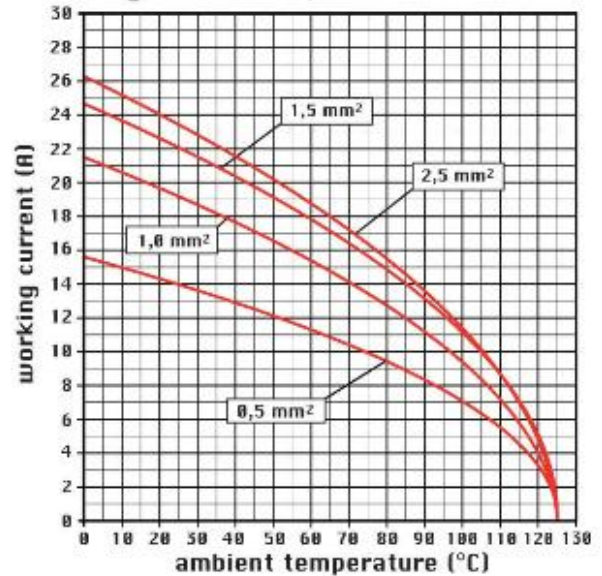


CMSEF 03



Catalogue drawings

diagram CMSE 03 poles



Notes

CMSEF/M 03 inserts:

- characteristics according to EN 61984:
 - 16A 830V 8kV 3
 - 16A 1000V 8kV 2
 - 16A 720/1250V 8kV 2
 - auxiliary contacts: 16A 500V 6kV 3
 - UL, CSA, CCC, GOST certified
 - rated voltage according to UL/CSA: 600V
 - insulation resistance: > 10 GOhm
 - ambient temperature limit: -40 °C ... +125 °C
 - are made of self-extinguishing thermoplastic resin UL 94 V0
 - mechanical life: > 500 cycles
 - contact resistance: < 3 mOhm
 - enclosures: size 57.27:
- C-TYPE IP65/IP66
C7 IP67 stainless steel lever
V-TYPE IP65/IP66 stainless steel lever
T-TYPE IP65 insulating
JEI zinc-plated steel lever
BIG hoods
W-TYPE aggressive environments

EMC
central lever
IP68
panel supports: COB